

Standalone TerraSAS Photovoltaic Simulator

60 V

- Low output capacitance
- High bandwidth up to 200Hz
- High resolution I-V curve simulates static and dynamic conditions
- Designed for high speed Maximum Power Point Tracking (MPPT)
- Can be integrated into a multi-channel system for higher power testing
- Energy Harvest and Oscilloscope measurements built in
- Low voltage, high bandwidth version for DC Power Optimizers



115	208	400
480		



For microgrids, energy storage, and inverter test applications, the TerraSAS™ series photovoltaic (PV) simulators are specifically designed to emulate the dynamic electrical behavior of a terrestrial PV solar array. They offer low output capacitance and high closed loop bandwidth to keep up with the advanced Maximum Power Point Tracking (MPPT) algorithms used in today's grid-tied inverters.

The ETS Embedded TerraSAS is a high performance solution in a small form factor that combines an agile power supply with an innovative I-V curve generator in a single standalone unit.

- ETS1000: For non-isolated string inverters up to 1000Vdc Voc.
- ETS600: For use with string inverters that contain transformer isolation up to 600Vdc Voc.
- ETS80: For use with micro-inverters or DC optimizers up to 80Vdc Voc

Application

Many solar inverters generate AC ripple on their DC input, which is connected to the photovoltaic array. For single phase inverters, the frequency of this ripple is twice the line frequency (120 Hz for US models). The simulator's power supplies must not suppress this ripple as a function of their regulation loop. An increasing number of inverters (and virtually all micro-inverters) accurately measure amplitude and phase of the ripple voltage and current to quickly track the MPP of the array. This approach allows tracking the MPP at a much higher speed when compared to conventional dithering techniques (also called perturbate-and-observe). Faster tracking of the

MPP results in a much higher overall efficiency in cloudy conditions, where the irradiance is constantly changing. It is likely that all solar inverters will use this approach in the near future, since end users are very sensitive to the overall efficiency of their solar energy installations. To satisfy this requirement, the PV simulator must be capable of reproducing the voltage / current behavior of a solar array at the ripple frequency. Most standard switching power supplies employ very large output capacitors and inductors in their output circuits and are unable to deliver the required performance - regardless of the response speed of the I-V curve controller. Elgar's TerraSAS line of PV simulators are based on high speed versions of our standard products, where output capacitors and other speed-limiting components have been adjusted. This results in a speed improvement of 10 times or better.

Proprietary features built into the PV controller hardware and firmware, combined with our high speed power supplies, deliver the required performance. This technology was extensively tested on micro-inverters and is ready to test the next generation of inverters. The required performance is delivered by high speed switching power supplies and advanced DSP signal processing techniques. In some conditions traditional DC power sources using IGBT technology do not meet MPPT response speed requirements, depending on the MPPT principles. Our power supplies use Power MOSFETs, which typically switch ten times as fast as the most recent IGBTs. Higher switching frequency translates to smaller output capacitors and inductors - which is the key to a successful high speed power supply design

AMETEK
Programmable Power
 9250 Brown Deer Road
 San Diego, CA 92121-2267
 USA



Product Overview

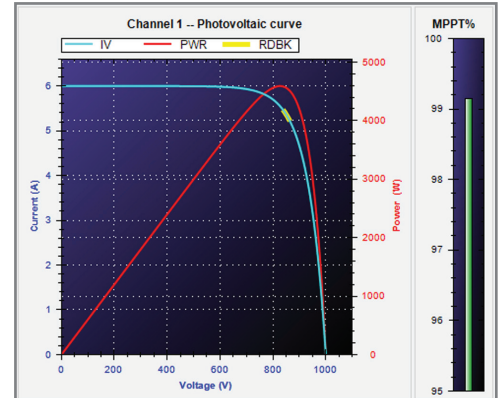
The ETS series standalone TerraSAS consists of a programmable DC power supply with control software and GUI interface, output isolation, and a unique PV simulation engine that provides the I-V curve. This combination of hardware, software, and firmware allows the TerraSAS to simulate test protocols or combinations of events that a real-world solar installation will be subjected to.

The included software allows modeling of a PV panel without an extensive knowledge of solar array parameters. The only parameters required for a simulation are the open circuit voltage (V_{oc}), short circuit current (I_{sc}), and the peak power parameters V_{mpp} and I_{mpp} . Changes to these parameters allow the shape of the I-V curve to be adapted to any fill factor between 0.5 and 0.95.

Once an I-V curve has been generated, changes to the irradiation level or temperature can be modified on the fly to test the behavior of a grid tied inverter under realistic conditions for cloud shadowing and panel temperature rise. Long term weather simulations can be loaded and run to determine the amount of energy harvest delivered in a given situation. Inverter designers use these accuracy and efficiency tests to optimize real MPP search modes.

Scalability

Power supplies are available in 850W, 5kW, 10kW, and 15KW increments. The 80V units are available in two power levels: 1200W for microinverters and 850W for DC power optimizers. The bandwidth on the 850W version has been improved to 2kHz by adding a linear regulation output stage. 600V units are available in 5kW, 10kW, and 15kW versions depending on I_{sc} requirements. 1000V units are available in 5kW and 10kW versions depending on I_{sc} requirements. All versions are easily connected in parallel to scale output power up to handle microinverters, string inverters, and even utility scale inverters. Many models can also be connected in series to handle higher voltage tests. Please refer to the connection diagrams located in the User Manual and follow appropriate wiring codes before connecting ETS PV simulators in series or parallel.



Real time I-V curve display

The Elgar Real time I-V curve display is updated 20 times per second to illustrate dynamic inverter behavior (operating point and sweep amplitude). Compared to other commercially available solar array simulators with an update rate of only 1Hz, this allows more accurate analysis of the inverter's actual MPP tracking ability.

Basic I-V Curve simulation

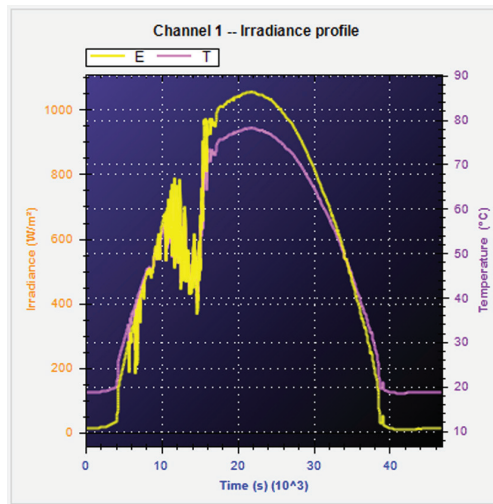
1. Create and add a curve
2. Drag and drop this curve onto the channel tile
3. Click the ON/OFF button on the channel tile to execute curve

Basic I-V Curve simulation

The Elgar TerraSAS user interface is intuitive, graphically colorful and simple to learn. I-V curves are created by entering simple parametric data or by importing data from the Sandia TAM database. It is not necessary to use Java Script or any other Script hosting to create an IV curve and execute it.

Dynamic Irradiance profile display

The Elgar TerraSAS profile display of Irradiance and temperature is unique and innovative. It enables inverter designers to easily load and implement standards based cloudy condition scenarios, such as the weighted efficiency measurements called out in EN50530 or California Energy Commission. The ability to model dynamic performance profiles allows complex test validation in any situation in a repeatable, reliable manner. These standard profiles are impossible to simulate with a real array. It can also be controlled to a very fine degree and real profiles can be entered and run from actual speed to 100 times actual speed for accelerated lifecycle tests.



TerraSAS dynamic irradiance profile display

CH	P/A	Time [s]	Offset [s]	Speed	Controls
ALL					
1	P1	10,220.95	10,213	1	⏪ ⏩ ⏸ ⏴ ⏵ ⏹ ⏶ ⏷
2		0.00	0	1	⏪ ⏩ ⏸ ⏴ ⏵ ⏹ ⏶ ⏷
3		0.00	0	1	⏪ ⏩ ⏸ ⏴ ⏵ ⏹ ⏶ ⏷
4		0.00	0	1	⏪ ⏩ ⏸ ⏴ ⏵ ⏹ ⏶ ⏷
5		0.00	0	1	⏪ ⏩ ⏸ ⏴ ⏵ ⏹ ⏶ ⏷
6		0.00	0	1	⏪ ⏩ ⏸ ⏴ ⏵ ⏹ ⏶ ⏷
7		0.00	0	1	⏪ ⏩ ⏸ ⏴ ⏵ ⏹ ⏶ ⏷
8		0.00	0	1	⏪ ⏩ ⏸ ⏴ ⏵ ⏹ ⏶ ⏷

Curves Profiles Arrays

ID	Irradiance profile name
1	Cloudy day

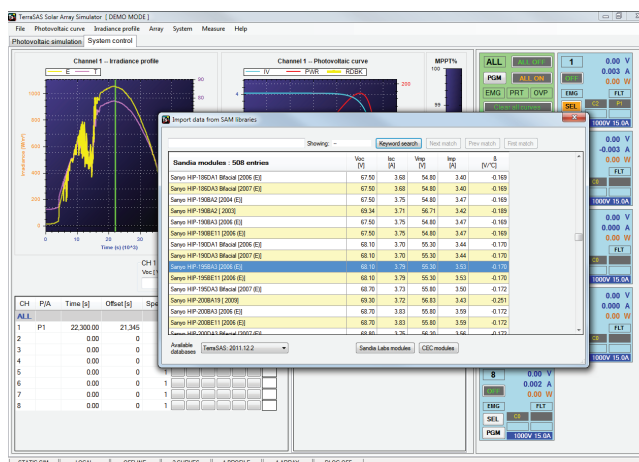
ETS TerraSAS - Specifications

Photovoltaic array modeling

This feature allows the user to quickly define an array of PV panels connected in series or parallel. Using this array modeling capability, the user can simulate such real world conditions as

mismatched panels, which result in multiple hump I-V curves. It is important to verify that the MPPT algorithm finds and settles on the universal MPP, not a local maximum.

Photovoltaic array modeling



Import module data from embedded Sandia database and create I-V Curve

Build the array model by binding to the desired curve and specifying the array size

The effects of shadowing, aging and faulty modules can be previewed in real time. the resulting I-V curve can be dragged and dropped to any output for inverter testing.

Specifications

Model Number ¹	ETS60X14C	ETS80X10.5C	ETS150X5.6C	ETS80X15C	ETS600X __	ETS1000 __
Output voltage, Voc (V)	60	80	150	80	600	1000
Output current, Isc (A)	14.2	10.6	5.7	15	8, 17, 25	10
Output power @ 0.85FF (W)	714	714	714	1020	12750	8500
MPP tracking speed (Hz) ²	500	500	500	120	200	500
I-V curve resolution (# of pts)	1024	1024	1024	1024	1024	1024
Output capacitance	< 10nF	< 10nF	< 10nF	< 70uF	< 70uF	< 3uF
Output isolation (Vpk)	+600	+600	+600	+600	+600	+1400
Available I/O	Ethernet	Ethernet	Ethernet	Ethernet	Ethernet	Ethernet
Remote sense	10V	10V	10V	10V	10V	10V
AC Input Voltage, V (max operational range)	85-264VAC	85-264VAC	85-264VAC	100-130VAC low 170-230VAC high	C: 187-242VAC D: 342-440 VAC E: 396-528 VAC	C: 187-242VAC D: 342-440 VAC E: 396-528 VAC
Input frequency, Hz	47-63	47-63	47-63	47-63	47-63	47-63
Power factor	> 0.9 typical	> 0.9 typical	> 0.9 typical	> 0.7 typical	> 0.9 typical	> 0.9 typical
Output voltage noise Measured across a 1µF capacitor at the end of a 1.8m(6ft) line at full load, 20MHz	< 0.35 Vpp	< 0.35 Vpp	< 0.35 Vpp	< 1 Vpp	< 0.6 Vpp	< 0.6 Vpp
Output current noise Measured across a 1µF capacitor at the end of a 1.8m(6ft) line at full load, 650kHz	< 100 mApp	< 100 mApp	< 100 mApp	< 100 mApp	< 200 mApp	< 200 mApp
Operating temperature	0-40 degs C	0-40 degs C	0-40 degs C	0-50 degs C	0-50 degs C	0-50 degs C
Physical dimensions	17.5 x 1.7 x 19.0 in 445 x 43.6 x 483 mm 19 lbs (8.6 kg)	17.5 x 1.7 x 19.0 in 445 x 43.6 x 483 mm 19 lbs (8.6 kg)	17.5 x 1.7 x 19.0 in 445 x 43.6 x 483 mm 19 lbs (8.6 kg)	20.4 x 1.7 x 19.0 in 518 x 43.6 x 483 mm 23 lbs (10.5 kg)	25.5 x 5.3 x 19.0 in 64.7 x 13.3 x 48.3 cm 5kW 40 lbs (18 kg) 10kW 60lbs (27kg) 15kW 80lbs (36kg)	
Regulatory	Certified to UL/CSA 61010 and IEC/EN 61010-1					

Notes

1 See next page for full listing of model numbers and configurations

2 Maximum MPPT rate of the inverter under test. Closed loop analog output bandwidth is much greater.

ETS TerraSAS

ETS Model Numbers					
Model Number	Voc (V)	Isc (A)	Power rating	Input Voltage (AC)	MPP Update Rate
ETS60X14C-PVF	60	14	850W	110/220VAC	500Hz
ETS80X10.5C-PVF	80	10.5	850W	110/220VAC	500Hz
ETS150X5.6C-PVF	150	5.7	850W	110/220VAC	500Hz
ETS80X15C-PVE	80	15	1200W	110/220VAC	120Hz
ETS600X8C-PVF	600	8	5kW	208VAC	200Hz
ETS600X8D-PVF	600	8	5kW	400VAC	200Hz
ETS600X8E-PVF	600	8	5kW	480VAC	200Hz
ETS600X17C-PVF	600	16.7	10kW	208VAC	200Hz
ETS600X17D-PVF	600	16.7	10kW	400VAC	200Hz
ETS600X17E-PVF	600	16.7	10kW	480VAC	200Hz
ETS600X25C-PVF	600	25	15kW	208VAC	200Hz
ETS600X25D-PVF	600	25	15kW	400VAC	200Hz
ETS600X25E-PVF	600	25	15kW	480VAC	200Hz
ETS1000X10C-PVF	1000	10	10kW	208VAC	200Hz
ETS1000X10D-PVF	1000	10	10kW	400VAC	200Hz
ETS1000X10E-PVF	1000	10	10kW	480VAC	200Hz