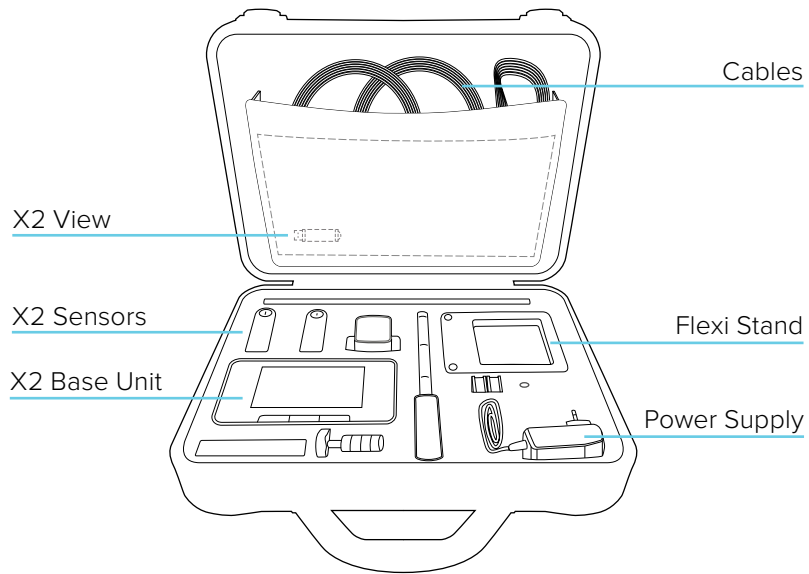


YOUR RAYSAFE X2 SYSTEM



LEARN MORE

BASE UNIT, SENSORS AND ACCESSORIES

Further instructions for use can be found in the base unit. Press the menu button and select Help.

X2 VIEW

X2 View help can be accessed in the program's Help menu.

CALIBRATION DATE

Press the "i" icon for the connected sensor, found in the Setup screen in the base unit, to get the calibration date.

MEASUREMENT SPECIFICATIONS

Swipe right when viewing a single parameter to read measurement specifications for that parameter. Visit <http://www.raysafe.com> for complete instrument specifications.

TECHNICAL SUPPORT

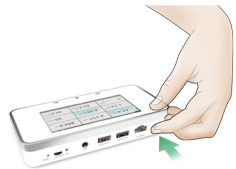
Please don't hesitate to contact our support desk if you have any questions. Visit <http://www.raysafe.com> for contact information.

QUICK GUIDE

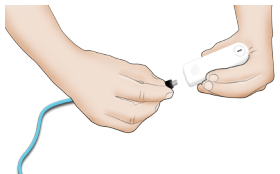
RaySafe X2

GETTING STARTED

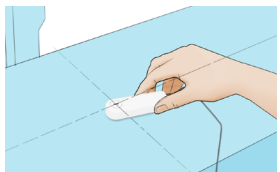
Note! To change the base unit language, swipe right from Home screen (Setup screen), press X2 Base Unit, and select language.



Turn on the base unit



Connect a sensor



Position and expose

NAVIGATING THE BASE UNIT



Menu Home Back



Power

Press the power button shortly to enter sleep mode. After a while in sleep mode, the base unit will turn off automatically.

Press the button for 2 seconds to turn it off immediately.



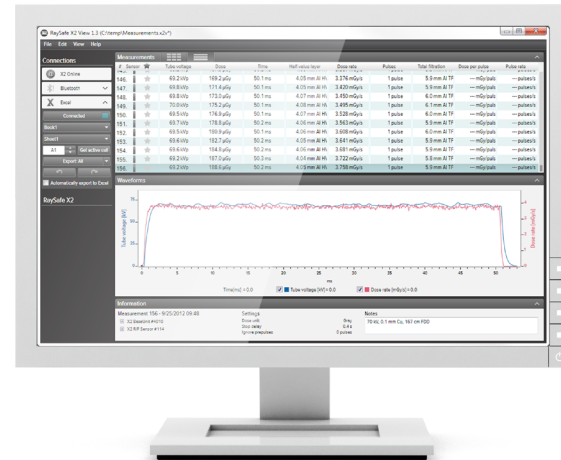
Swipe sideways on the screen to access different views.

Swipe up and down to scroll between measurements.



Tap on a parameter to get larger digits. Swipe right to view the parameter information with measurement specifications, and left to view waveform, if available for the current parameter.

RAYSAFE X2 VIEW



Connect to a computer running X2 View to:

- import saved measurements
- analyze waveforms
- check X2 Online for updates
- export to Excel®