

TECHNICAL DATA

Fluke ii900 Sonic Industrial Imager



Leaks in compressed air, gas and vacuum systems hit both production uptime and the operations bottom line.

While this is a known issue, locating air leaks has been a time-consuming and tedious—until now. With the Fluke ii900 Sonic Industrial Imager your maintenance team can quickly pinpoint the location of compressed air and vacuum leaks. With minimal training, your maintenance technicians can begin checking for air leaks during their typical maintenance routine—even during peak operation hours.

This industrial imager offers a new way to locate issues using sound. It is an intuitive, simple to use tool that can isolate the frequency of leaks or vacuums, even in extremely noisy production environments. A leak location is determined by discerning the direction from which a sound originates by the time delays that occur as the sound passes over an array of microphones. A SoundMap™ is displayed in color over a visual image allowing for easy visual location. With the full array of microphones, it is easy to scan a large area and even capture leaks from a distance.

Finally a better way, quick, simple compressed air, gas and vacuum leak identification.

- Do more with the same air compressors—delay the capital expense of installing an additional compressor
- Ensure proper air pressure to your pneumatic equipment
- Lower energy costs
- Reduce leak detection time
- Improve reliability in your production line
- Make leak detection part of your typical maintenance routine
- Train the team in a matter of minutes
- Validate repairs on the spot

SOUNDSIGHT™ TECHNOLOGY

ACOUSTIC IMAGING

Blended live SoundMap™ with visual image

SENSITIVITY

*Detects 0.005 CFM leak at 100PSI from up to 32.8 feet**

FREQUENCY RANGE

from 2kHz to 52kHz

MAXIMUM OPERATING DISTANCE

*Up to 164 feet (50 meters)**

DISPLAY

7 inch 1280 x 800 LCD with capacitive touchscreen

SoundSight™ refers to the Fluke technology of converting sound waves to a visual image.

*Depending on ambient conditions

Specifications

| Fluke ii900 Sonic Industrial Imager | | Definitions |
|---|--|--|
| Sensors | | |
| # of microphones | 64 digital MEMS microphones | Micro-Electro-Mechanical Systems, or MEMS refers to miniaturized mechanical and electro-mechanical elements |
| Frequency band | 2 kHz to 52 kHz | |
| Sound pressure sensitivity | Detects a 0.005 CFM leak at 100PSI from up to 32.8 feet (10 meters)* | |
| Operation distance range | 0.5 to > 50 meters (0.16 to > 164 feet) | |
| Field of view | 65 ° ± 3 ° | |
| Minimum frame rate | 25 FPS | The number of Frames Per Second (FPS) indicates the number of times the images on the screen is refreshed each second |
| Built-in digital camera (visible light) | | |
| Field of view (FOV) | 65 ° ± 3 ° | |
| Focus | Fixed lens | |
| Display 7" LCD with backlight, under-sunlight readable | | |
| Resolution | 1280 x 800 (1,024,000 pixels) | |
| Touchscreen | Capacitive | Extremely precise and quick responding |
| Acoustic image | Yes, SoundMap™ technology | SoundMap™ is a visual map of noise sources using an acoustical array |
| Image storage | | |
| Storage capacity | Internal memory with the capacity for 999 picture files or 20 video files | |
| Image format | Blended visual and SoundMap™.JPG or .PNG | |
| Video format | Blended visual and SoundMap™.MP4 | |
| Video length | 30 seconds | |
| Digital export | USB-C compatible for data transfer | |
| Acoustic measurements | | |
| Measurement range | 29.7 dB to 120 dB SPL at 2kHz 16 dB to 106.3 dB SPL (± 1 dB) at 19 kHz 21.4 dB to 117 dB SPL (± 1 dB) at 52 kHz | Sound pressure level (dB SPL) or acoustic pressure is the local pressure deviation from the ambient-decible and sound pressure level |
| Auto max/min dB gain | Auto or manual, user selectable | |
| Frequency band selection | User selectable through user-made presets or manual entry | |
| Software | | |
| Ease of use | Intuitive user interface | |
| Trend graphs | Frequency and dB scale | |
| Spot markers | dB level reading at center point of the image | |
| Battery | | |
| Batteries (field-replaceable, rechargeable) | Rechargeable Li-ion, Fluke BP291 | |
| Battery life | ≥2 hours (product includes spare battery) | |
| Battery charging time | 3 hours | |
| Battery charging system | External dual-bay charger, EDBC 290 | |
| General specifications | | |
| Standard palettes | 4: Grayscale, Ironbow, Blue-Red and Stepwise Blue | |
| Operating Temperature | 0 °C to 35 °C (32 °F to 95 °F) | |
| Storage Temperature | -20 °C to 70 °C (-4 °F to 158 °F) | |
| Relative humidity | 10 % to 95 % non-condensing | |
| Size (H x W x L) | 186 mm x 322 mm x 68 mm () | |
| Weight (battery included) | 1.7 kg (3.75 pounds) | |
| Main unit rating | IP40 protection against particles 1mm or greater and dripping water | |
| Sensor head rating | IP51 | |
| Warranty | 2 year | |
| Self-diagnostic notification | Array-health test to identify when microphone array needs attention | |
| Supported languages | Dutch, English, Finnish, French, German, Italian, Japanese, Korean, Polish, Portuguese, Russian, Simplified Chinese, Spanish, Swedish, Traditional Chinese | |
| RoHS compliant | Yes | |
| Safety | | |
| General Safety | IEC 61010-1 | |
| Electromagnetic Compatibility (EMC) International | IEC 61326-1: Portable Electromagnetic Environment IEC 61326-2-2 CISPR 11: Group 1, Class A | |
| Korea (KCC) | Class A Equipment (Industrial Broadcasting and Communication) | |
| USA (FCC) | 47 CFR 15 subpart B. This product is considered an exempt device per clause 15.103 | |

*Depending on ambient conditions



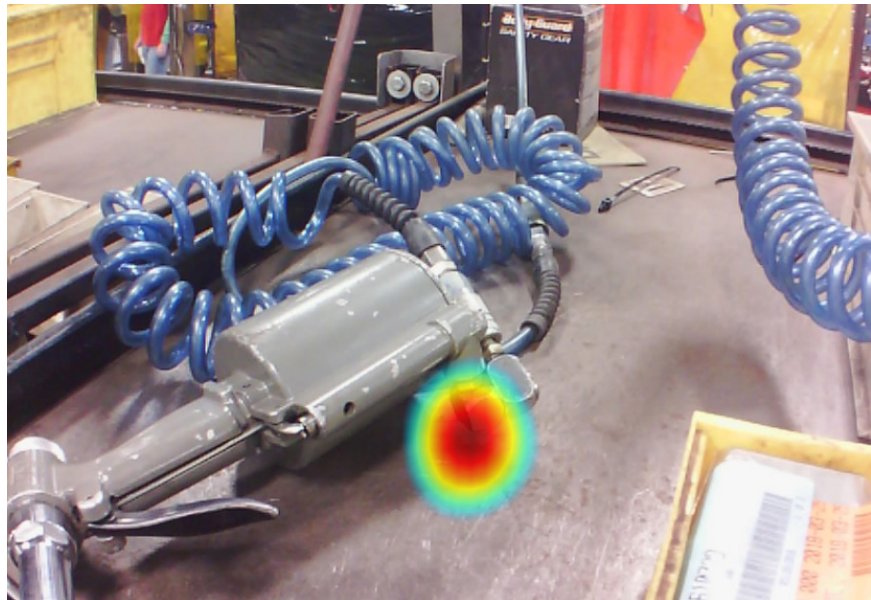
Ordering information

FLK-ii900 Sonic Industrial Imager

Included

Imager; AC power supply and battery pack charger (including universal AC adapters); two rugged lithium ion smart battery packs; USB cable; rugged, hard carrying case; two rubber array covers; adjustable hand strap and adjustable neck strap.

Visit your local Fluke website or contact your local Fluke representative for more information.



Images taken with the ii900 Sonic Industrial Imager in an industrial environment.

Fluke. *Keeping your world up and running.®*

Fluke Corporation
PO Box 9090, Everett, WA 98206 U.S.A.
Fluke Europe B.V.
PO Box 1186, 5602 BD
Eindhoven, The Netherlands

Modification of this document is not permitted without written permission from Fluke Corporation.

For more information call:
In the U.S.A. (800) 443-5853 or
Fax (425) 446-5116
In Europe/M-East/Africa +31 (0)40 267 5100
or Fax +31 (0)40 267 5222
In Canada (800)-36-FLUKE or
Fax (905) 890-6866
From other countries +1 (425) 446-5500 or
Fax +1 (425) 446-5116
Web access: <http://www.fluke.com>

©2019 Fluke Corporation.
Specifications subject to change without notice.
3/2019 6012097a-en