



AirMagnet Planner for Cisco Small Business

AirMagnet Planner for Cisco Small Business accounts for building materials, obstructions, access point configurations, antenna patterns and a host of other variables to provide a reliable predictive map of Wi-Fi signal and performance for Cisco Small Business Networks. The solution offers superior predictive modeling to determine ideal quantity, placement and configuration of APs for optimal security, performance and compliance.

AirMagnet Planner for Cisco Small Business includes built-in automated tools to help users with their migration strategy from existing legacy 802.11a/b/g networks to the new 802.11n technology.



Great Networks Start with Great Design

An accurate network plan can be the most critical step of a successful wireless deployment. An unscientific plan can lead to over-spending on network infrastructure or lead to underserved and unhappy end-users. AirMagnet Planner for Cisco Small Business removes the need for guess-work and lets installers estimate the quantity, placement and configuration of Cisco Small Business APs required to deliver full coverage for end-users while minimizing signal bleed into unsecured areas. Users can preview the network by channel or SSID, ensuring the network conforms to any user specification.

Wi-Fi Tailored to the Environment

AirMagnet Planner for Cisco Small Business makes it easy to build a detailed model of any wireless environment, even before the network is deployed. Simply load in a map of the location, and use the built-in library of walls, doors and windows to precisely match the building's characteristics. The environment can also be customized to account for cubicles, offices, elevators and a variety of warehouse obstructions. All environmental settings are fully customizable and custom materials can be created from scratch to meet the user specifications.

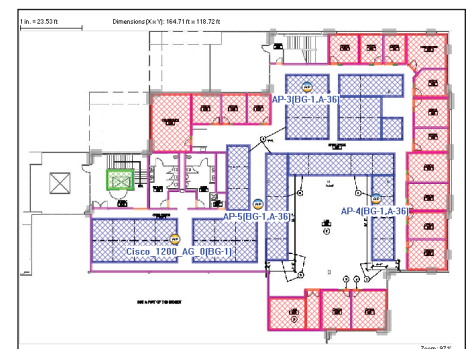


Figure 1: Customizable building characteristics

Build the Network

AirMagnet Planner for Cisco Small Business provides full control of the proposed wireless infrastructure to the users. They can add Cisco APs to any location and experiment to find the ideal AP placement for the environment based on their requirements. AirMagnet Planner for Cisco Small Business also provides full control over all AP settings with independent settings for 2.4 GHz and 5 GHz radios. Users can set the AP channel, IP address, transmit power, antenna type, orientation, height and 802.11n specifications. When the planning session is complete, users can generate a professional Bill of Materials report with all the information that is needed to properly install the network, and includes a complete list of required APs, their ideal placement and configuration settings. Along with RF coverage information, users are also powered with performance metrics such as data rates and throughput.

802.11n Modeling

AirMagnet Planner for Cisco Small Business is the WLAN industry's only planning solution that covers all aspects of a successful 802.11n deployment – migration, performance prediction and validation. Users can design new 802.11n greenfield networks, as well as, plan their migration strategies for existing legacy networks, including one-to-one replacements or the phased introduction of 802.11n devices into their legacy network. Users can plan their 802.11n deployments for maximized performance without any physical AP roll-out and are powered with unique coverage maps for WLAN throughput and other 802.11n coverage maps, such as Operating Mode, MCS Transmit Rate and Channel Width, to predict the WLAN performance at every location on the floor.

Automated WLAN Modeling

AirMagnet Planner for Cisco Small Business also includes an “advisor feature” to automatically place Cisco Small Business APs on site floor plans. Users can specify the minimum signal coverage expected, the transmit power, media type of the AP, etc. and mark Wi-Fi coverage areas and areas where APs cannot be placed.

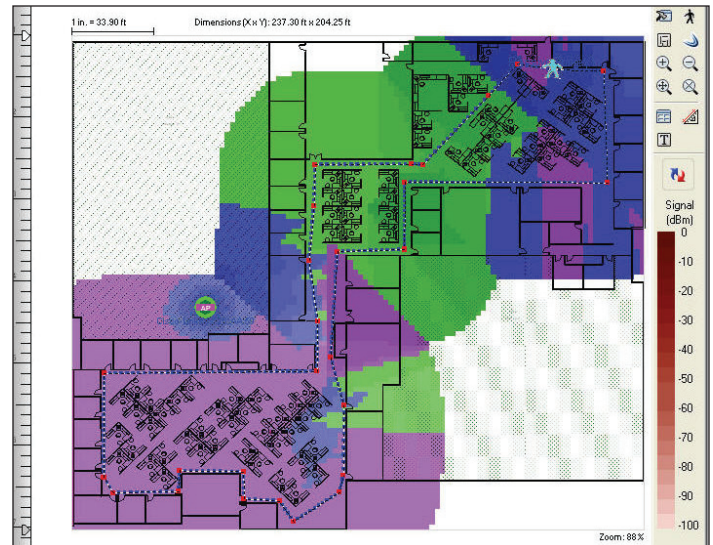


Figure 2: 802.11n coverage maps

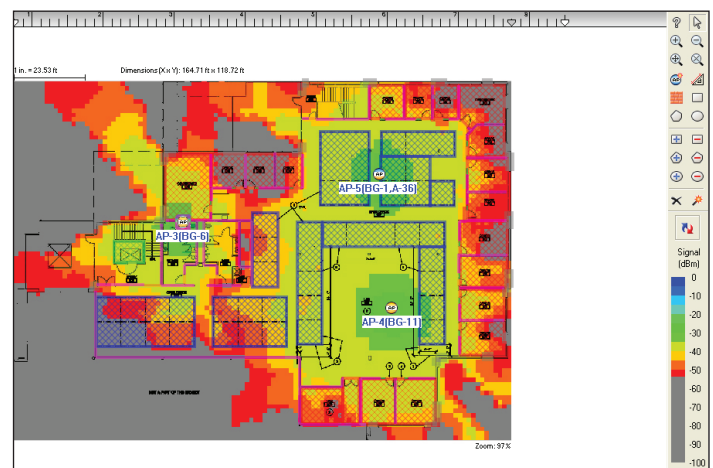


Figure 3: Automated WLAN modeling

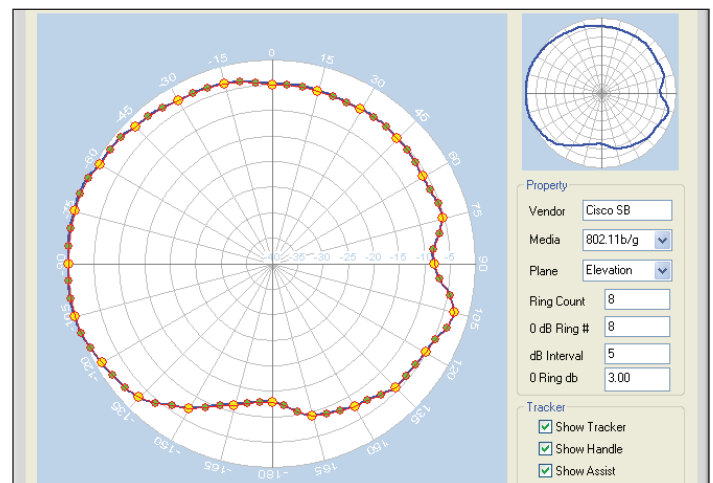


Figure 4: Select any Cisco Small Business Antenna



Custom Antenna Design

AirMagnet Planner for Cisco Small Business includes Cisco's Small Business Access Points and antenna patterns. . AirMagnet Planner for Cisco Small Business also includes a built-in tool to create customized antenna patterns, allowing users to replicate the characteristics of literally any available antenna from Cisco

Supported AP and wireless router models:

- Cisco AP541N Wireless Access Point
- Cisco WAP4410N Wireless-N Access Point
- Cisco WAP200 Wireless-G Access Point - PoE/Rangebooster
- Cisco WAP2000 Wireless-G Access Point
- Cisco WAP121 Wireless-N Access Point with PoE
- Cisco WAP321 Wireless-N Selectable-Band Access Point with PoE
- Cisco WRVS4400N Wireless-N Gigabit Security Router
- Cisco RV110W Wireless-N VPN Firewall
- Cisco RV120W Wireless-N VPN Firewall
- Cisco RV220W Wireless Network Security Firewall
- Cisco RV180W Wireless-N Multifunction VPN Router

Minimum System Requirements

Microsoft® Windows Windows 7 Enterprise/Professional/Ultimate (32-bit and 64-bit), Vista™ Business/Ultimate (32-bit only and SP2), or XP™ Professional 32-bit (SP3)
Intel® Pentium® M 1.6 GHz (Intel® Core™ 2 Duo 2.00 GHz or higher recommended)
1 GB memory (2 GB recommended) for Windows XP™. 2 GB or higher required for Windows Vista™ & Windows 7
800 MB of free disk space
A site map in a format supported by AirMagnet Planner (supported formats are: .bmp, .dib, .dwg, .dxf, .emf, .gif, vsd, .jpg, .png, .vdx, or .wmf.)

**This product features Autodesk RealDWG technology: <http://www.autodesk.com/autodeskrealdwg>

Please visit the website for more detailed information on minimum system requirements.

Product Facts

Product	Part Number
AirMagnet Planner for Cisco Small Business, SW	AM/A4082EC
1 Year maintenance for AirMagnet Planner for Cisco Small Business (Email support only)	GLD-S4082EC

Fluke Networks
P.O. Box 777, Everett, WA USA 98206-0777

Fluke Networks operates in more than 50 countries worldwide. To find your local office contact details, go to www.flukenetworks.com/contact.

©2012 Fluke Corporation.
Printed in U.S.A. 4/2012 4179061A